

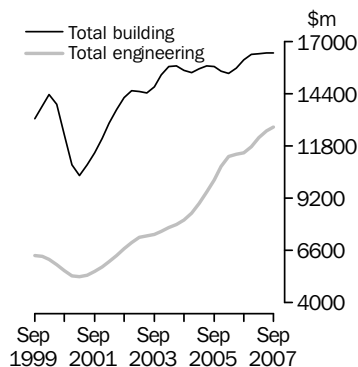
CONSTRUCTION WORK DONE AUSTRALIA PRELIMINARY

EMBARGO: 11.30AM (CANBERRA TIME) WED 28 NOV 2007

KEY FIGURES

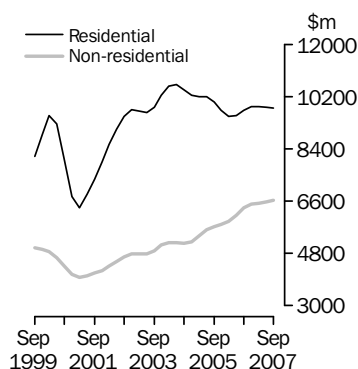
Value of construction work done

Volume terms
Trend estimates



Value of building work done

Volume terms
Trend estimates



INQUIRIES

For further information about these and related statistics, contact the National Information and Referral Service on 1300 135 070 or Paul Pamment on Adelaide (08) 8237 7647.

	Sep qtr 07	Jun qtr 07 to Sep qtr 07	Sep qtr 06 to Sep qtr 07
	\$m	% change	% change

TREND ESTIMATES (a)

Value of work done

Building	16 427.1	0.1	2.1
Residential	9 801.4	-0.4	0.7
Non-residential	6 623.3	0.8	4.0
Engineering	12 724.7	1.3	11.1
Total construction	29 170.1	0.7	5.9

SEASONALLY ADJUSTED ESTIMATES (a)

Value of work done

Building	16 664.1	4.0	4.7
Residential	9 857.6	1.6	1.9
Non-residential	6 806.4	7.6	9.2
Engineering	12 661.0	1.4	14.9
Total construction	29 325.1	2.8	8.9

(a) Reference year for Chain Volume Measures is 2005-06.

KEY POINTS

VALUE OF CONSTRUCTION WORK DONE, VOLUME TERMS

TOTAL CONSTRUCTION

- The trend estimate for total construction work done rose 0.7% in the September quarter 2007.
- The seasonally adjusted estimate for total construction work done rose 2.8%, to \$29,325.1m, in the September quarter, following a revised fall of 2.1% in the August quarter.

BUILDING WORK DONE

- The trend estimate for building work rose 0.1% in the September quarter. Residential building fell 0.4% while non-residential rose 0.8%.
- The seasonally adjusted estimate of building work done rose 4.0% in the September quarter, to \$16,664.1m. Residential building rose 1.6% to \$9,857.6m and non-residential building rose 7.6%, to \$6,806.4m.

ENGINEERING WORK DONE

- The trend estimate for Engineering work done rose 1.3% in the latest quarter.
- The seasonally adjusted estimate for Engineering work done rose 1.4%, to \$12,661.0m, in the September quarter.

NOTES

FORTHCOMING ISSUES

ISSUE (Quarter)

RELEASE DATE

December 2007

27 February 2008

March 2008

28 May 2008

.....

ABOUT THIS ISSUE

This publication provides an early indication of trends in building and engineering construction activity. The data are estimates based on a response rate of approximately 80% of the value of both building and engineering work done during the quarter. More comprehensive and updated results will be released in *Building Activity, Australia* (cat. no. 8752.0) on 21 January 2008 and in *Engineering Construction Activity, Australia* (cat. no. 8762.0) on 18 January 2008.

CHANGES IN THIS ISSUE

A new base year, 2005–06, has been introduced into the chain volume estimates which has resulted in revisions to growth rates in subsequent periods. In addition, the chain volume estimates have been re-referenced to 2005–06, thereby preserving additivity in the quarters after the reference year. Re-referencing affects the levels of, but not the movements in, chain volume estimates.

FUTURE CHANGES

Recently, the ABS has implemented improved methods of producing seasonally adjusted estimates, focused on the application of Autoregressive Integrated Moving Average (ARIMA) modelling techniques. The revision properties of the seasonally adjusted and trend estimates can be improved by the use of ARIMA modelling. ARIMA modelling relies on the characteristics of the series being analysed to project future period data. The projected values are temporary, intermediate values, that are only used internally to improve the estimation of the seasonal factors. The projected data do not affect the original estimates and are discarded at the end of the seasonal adjustment process. For more information on the details of ARIMA modelling see feature article 'Use of ARIMA modelling to reduce revisions' in the October 2004 issue of *Australian Economic Indicators* (cat. no. 1350.0). The December 2007 edition of *Construction Work Done, Australia, Preliminary* (cat. no. 8755.0) will use concurrent seasonal adjustment with ARIMA modelling where applicable to reduce the level of revision to seasonally adjusted estimates.

DATA NOTES

There are no notes about the data.

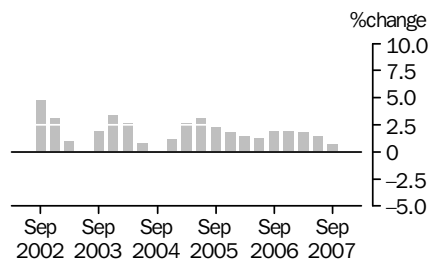
Susan Linacre

Acting Australian Statistician

CONSTRUCTION WORK DONE CHAIN VOLUME MEASURES

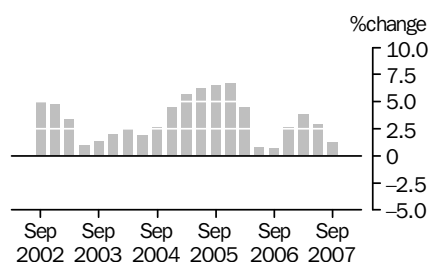
TREND PERCENTAGE CHANGE

TOTAL CONSTRUCTION



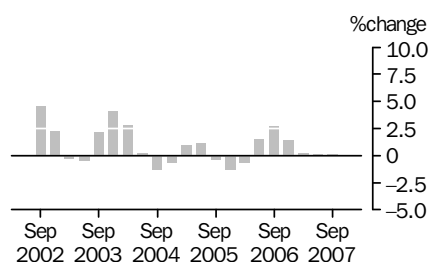
The trend estimate for total construction work done has increased for the past 26 quarters driven by consistent growth in the Engineering sector.

ENGINEERING



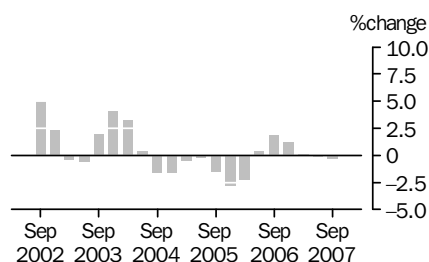
The trend estimate for engineering construction work done has increased for the past 26 quarters.

BUILDING



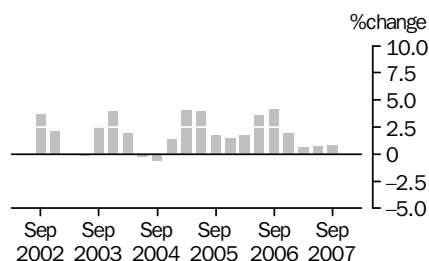
The trend estimate for total building work done has risen for the last six quarters.

RESIDENTIAL



The trend estimate for residential building work done has fallen for the last two quarters after rising for the previous four quarters.

NON-RESIDENTIAL

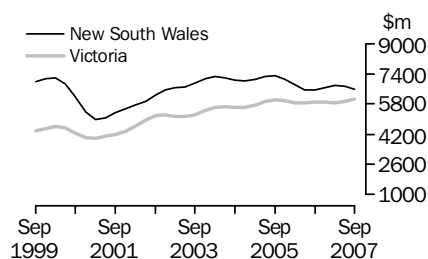


The trend estimate for non-residential work done has risen for the last 12 quarters.

CONSTRUCTION WORK DONE STATES AND TERRITORIES

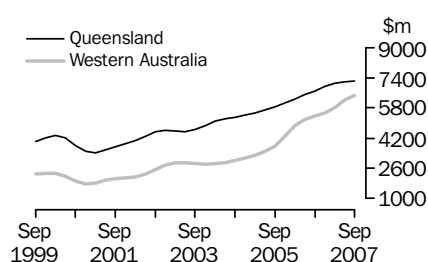
CHAIN VOLUME MEASURES—TREND ESTIMATES

NEW SOUTH WALES
VICTORIA



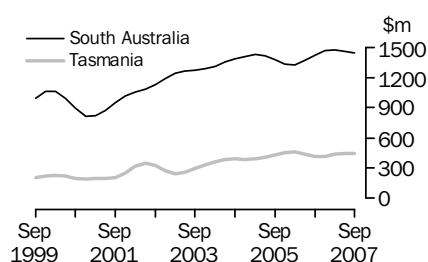
Construction work done in New South Wales has fallen for the last two quarters. Construction work done in Victoria has risen for the last two quarters.

QUEENSLAND
WESTERN AUSTRALIA



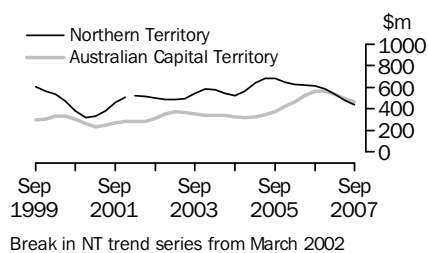
Construction work done has grown in Queensland for the last 17 quarters. Construction work done in Western Australia has grown for the last 15 quarters.

SOUTH AUSTRALIA
TASMANIA



Construction work done in South Australia has fallen for the last two quarters after rising for the previous four quarters. In Tasmania, construction work done fell in the last quarter, after rising for the previous three quarters.

NORTHERN TERRITORY
AUSTRALIAN CAPITAL
TERRITORY



Break in NT trend series from March 2002

Construction work done in the Northern Territory has fallen for the last nine quarters. In the Australian Capital Territory, construction work done has fallen for the last three quarters following rises for the previous eight quarters.

LIST OF TABLES

page

TABLES

1	Construction work done, chain volume measures	6
2	Construction work done, chain volume measures, change from previous period	7
3	Construction work done, current prices	8
4	Construction work done, current prices, change from previous period	9
5	Value of building work done, chain volume measures	10
6	Value of building work done, chain volume measures, change from previous period	11
7	Value of building work done, current prices	12
8	Value of building work done, current prices, change from previous period	13
9	Construction work done, states and territories, chain volume measures, original	14
10	Construction work done, states and territories, chain volume measures, change from previous period, original	15
11	Construction work done, states and territories, current prices, original	16
12	Construction work done, states and territories, current prices, change from previous period, original	17
13	Construction work done, states and territories, chain volume measures	18
14	Construction work done, states and territories, chain volume measures, change from previous period	19
15	Building Activity, work in the pipeline, current prices, original	20
16	Number of dwellings approved but not yet commenced at end of quarter, states and territories, original	21

CONSTRUCTION WORK DONE, Chain volume measures(a)

Period	BUILDING WORK DONE			ENGINEERING WORK DONE			CONSTRUCTION WORK DONE		
	Private	Public	Total	Private	Public	Total	Private	Public	Total
	\$m	\$m	\$m	\$m	\$m	\$m	\$m	\$m	\$m
ORIGINAL									
2004-05	57 078.7	5 339.5	62 427.2	20 269.9	14 675.5	34 938.3	77 349.9	20 013.4	97 375.2
2005-06	56 537.8	5 932.7	62 470.5	26 651.8	17 274.1	43 925.9	83 189.6	23 206.8	106 396.4
2006-07	58 332.6	6 641.2	64 973.8	30 658.0	17 051.2	47 709.2	88 990.6	23 692.5	112 683.0
2006									
Jun Qtr	14 389.4	1 690.1	16 078.2	7 063.4	5 298.0	12 358.1	21 452.1	6 988.1	28 433.4
Sep Qtr	14 802.1	1 664.9	16 467.0	6 694.9	3 941.3	10 636.1	21 497.0	5 606.2	27 103.2
Dec Qtr	15 232.0	1 813.4	17 045.4	7 524.1	4 484.8	12 008.9	22 756.1	6 298.2	29 054.3
2007									
Mar Qtr	13 760.3	1 525.9	15 286.1	7 591.6	4 166.8	11 758.4	21 351.9	5 692.7	27 044.6
Jun Qtr	14 538.2	1 637.0	16 175.2	8 847.4	4 458.3	13 305.8	23 385.6	6 095.3	29 481.0
Sep Qtr	15 610.0	1 654.9	17 265.0	8 058.7	4 063.3	12 122.1	23 668.8	5 718.2	29 387.0
SEASONALLY ADJUSTED									
2006									
Jun Qtr	14 319.5	1 619.4	15 938.2	7 104.2	4 629.9	11 735.9	21 424.0	6 248.6	27 671.8
Sep Qtr	14 280.3	1 628.7	15 908.9	6 735.2	4 287.3	11 022.5	21 015.5	5 915.9	26 931.3
Dec Qtr	14 666.5	1 761.4	16 427.8	7 139.2	4 542.3	11 681.5	21 805.7	6 303.7	28 109.3
2007									
Mar Qtr	14 927.5	1 683.2	16 610.7	8 204.0	4 312.3	12 516.3	23 131.5	5 995.5	29 127.0
Jun Qtr	14 458.3	1 568.1	16 026.5	8 579.6	3 909.3	12 488.9	23 038.0	5 477.4	28 515.4
Sep Qtr	15 043.0	1 621.0	16 664.1	8 346.9	4 314.1	12 661.0	23 389.9	5 935.1	29 325.1
TREND									
2006									
Jun Qtr	14 074.2	1 593.9	15 667.6	6 895.8	4 465.3	11 372.8	20 966.6	6 058.6	27 038.6
Sep Qtr	14 417.6	1 679.2	16 096.5	6 943.7	4 512.2	11 448.9	21 359.1	6 190.9	27 544.6
Dec Qtr	14 631.9	1 702.5	16 334.4	7 142.5	4 660.0	11 752.8	21 793.4	6 367.5	28 087.2
2007									
Mar Qtr	14 710.6	1 672.7	16 383.4	(b)8 177.7	(b)4 001.2	12 204.6	(b)22 873.6	(b)5 656.5	28 586.2
Jun Qtr	14 783.2	1 626.2	16 409.6	8 413.8	4 149.9	12 564.7	23 194.6	5 775.0	28 973.0
Sep Qtr	14 848.1	1 586.0	16 427.1	8 504.7	4 223.8	12 724.7	23 372.0	5 816.8	29 170.1

(a) Chain volume measures, reference year 2005-06. See paragraphs 26-29 of the Explanatory Notes.

(b) Break in series between December 2006 and March 2007.

CONSTRUCTION WORK DONE, Chain volume measures(a)—Change from previous period

Period	BUILDING WORK DONE			ENGINEERING WORK DONE			CONSTRUCTION WORK DONE		
	Private	Public	Total	Private	Public	Total	Private	Public	Total
	%	%	%	%	%	%	%	%	%
ORIGINAL									
2004-05	1.0	2.5	1.1	15.1	13.9	14.6	4.4	10.8	5.6
2005-06	-0.9	11.1	0.1	31.5	17.7	25.7	7.5	16.0	9.3
2006-07	3.2	11.9	4.0	15.0	-1.3	8.6	7.0	2.1	5.9
2006									
Jun Qtr	13.9	23.1	14.8	12.1	24.4	17.0	13.3	24.1	15.7
Sep Qtr	2.9	-1.5	2.4	-5.2	-25.6	-13.9	0.2	-19.8	-4.7
Dec Qtr	2.9	8.9	3.5	12.4	13.8	12.9	5.9	12.3	7.2
2007									
Mar Qtr	-9.7	-15.9	-10.3	0.9	-7.1	-2.1	-6.2	-9.6	-6.9
Jun Qtr	5.7	7.3	5.8	16.5	7.0	13.2	9.5	7.1	9.0
Sep Qtr	7.4	1.1	6.7	-8.9	-8.9	-8.9	1.2	-6.2	-0.3
SEASONALLY ADJUSTED									
2006									
Jun Qtr	4.5	7.0	4.8	5.8	2.5	4.5	5.0	3.6	4.7
Sep Qtr	-0.3	0.6	-0.2	-5.2	-7.4	-6.1	-1.9	-5.3	-2.7
Dec Qtr	2.7	8.1	3.3	6.0	5.9	6.0	3.8	6.6	4.4
2007									
Mar Qtr	1.8	-4.4	1.1	14.9	-5.1	7.1	6.1	-4.9	3.6
Jun Qtr	-3.1	-6.8	-3.5	4.6	-9.3	-0.2	-0.4	-8.6	-2.1
Sep Qtr	4.0	3.4	4.0	-2.7	10.4	1.4	1.5	8.4	2.8
TREND									
2006									
Jun Qtr	1.0	6.4	1.6	0.9	0.6	0.9	1.0	2.0	1.3
Sep Qtr	2.4	5.4	2.7	0.7	1.0	0.7	1.9	2.2	1.9
Dec Qtr	1.5	1.4	1.5	2.9	3.3	2.7	2.0	2.9	2.0
2007									
Mar Qtr	0.5	-1.8	0.3	(b)np	(b)np	3.8	(b)np	(b)np	1.8
Jun Qtr	0.5	-2.8	0.2	2.9	3.7	3.0	1.4	2.1	1.4
Sep Qtr	0.4	-2.5	0.1	1.1	1.8	1.3	0.8	0.7	0.7

np not available for publication but included in totals where applicable, unless otherwise indicated

(a) Chain volume measures, reference year 2005-06. See paragraphs 26-29 of the Explanatory Notes.

(b) Break in series between December 2006 and March 2007.

CONSTRUCTION WORK DONE, Current prices

Period	BUILDING WORK DONE			ENGINEERING WORK DONE			CONSTRUCTION WORK DONE		
	Private	Public	Total	Private	Public	Total	Private	Public	Total
	\$m	\$m	\$m	\$m	\$m	\$m	\$m	\$m	\$m
ORIGINAL									
2004-05	54 194.5	4 992.3	59 186.8	19 240.1	13 823.2	33 063.3	73 434.6	18 815.5	92 250.1
2005-06	56 537.8	5 932.7	62 470.5	26 651.8	17 274.1	43 925.8	83 189.6	23 206.8	106 396.4
2006-07	60 767.5	6 998.3	67 765.8	34 077.4	18 737.9	52 815.3	94 844.9	25 736.2	120 581.1
2006									
Jun Qtr	14 610.6	1 724.6	16 335.1	7 323.9	5 453.5	12 777.3	21 934.4	7 178.0	29 112.5
Sep Qtr	15 177.2	1 715.3	16 892.5	7 225.1	4 286.8	11 511.9	22 402.3	6 002.1	28 404.4
Dec Qtr	15 762.2	1 897.9	17 660.1	8 283.4	4 891.9	13 175.3	24 045.6	6 789.8	30 835.4
2007									
Mar Qtr	14 402.8	1 616.7	16 019.5	8 528.9	4 602.1	13 131.0	22 931.7	6 218.8	29 150.5
Jun Qtr	15 425.3	1 768.5	17 193.8	10 040.0	4 957.1	14 997.1	25 465.3	6 725.6	32 190.9
Sep Qtr	16 794.6	1 816.0	18 610.6	9 189.2	4 551.3	13 740.5	25 983.7	6 367.3	32 351.1
SEASONALLY ADJUSTED									
2006									
Jun Qtr	14 537.5	1 653.8	16 191.3	7 346.0	4 746.4	12 092.4	21 883.5	6 400.2	28 283.7
Sep Qtr	14 654.5	1 681.1	16 335.6	7 228.2	4 667.4	11 895.6	21 882.7	6 348.5	28 231.2
Dec Qtr	15 189.9	1 844.6	17 034.5	7 796.0	4 982.4	12 778.3	22 985.8	6 827.0	29 812.8
2007									
Mar Qtr	15 636.8	1 783.5	17 420.3	9 124.9	4 800.8	13 925.7	24 761.7	6 584.3	31 346.1
Jun Qtr	15 351.9	1 693.4	17 045.3	9 629.4	4 371.4	14 000.9	24 981.4	6 064.8	31 046.2
Sep Qtr	16 200.7	1 780.8	17 981.5	9 438.3	4 887.3	14 325.5	25 638.9	6 668.1	32 307.0
TREND									
2006									
Jun Qtr	14 293.6	1 625.9	15 919.5	7 125.2	4 634.6	11 759.8	21 418.8	6 260.5	27 679.3
Sep Qtr	14 787.1	1 734.9	16 522.0	7 407.1	4 817.8	12 225.0	22 194.2	6 552.7	28 746.9
Dec Qtr	15 159.3	1 781.3	16 940.6	7 816.9	4 998.7	12 815.7	22 976.2	6 780.1	29 756.3
2007									
Mar Qtr	15 421.4	1 775.8	17 197.1	(a)9 079.7	(a)4 366.8	13 446.4	(a)24 501.0	(a)6 142.5	30 643.6
Jun Qtr	15 697.9	1 754.9	17 452.8	9 439.8	4 574.0	14 013.8	25 137.7	6 328.9	31 466.6
Sep Qtr	15 972.4	1 736.7	17 709.1	9 639.5	4 749.7	14 389.2	25 611.9	6 486.4	32 098.3

(a) Break in series between December 2006 and March 2007.

CONSTRUCTION WORK DONE, Current prices—Change from previous period

Period	BUILDING WORK DONE			ENGINEERING WORK DONE			CONSTRUCTION WORK DONE		
	Private	Public	Total	Private	Public	Total	Private	Public	Total
	%	%	%	%	%	%	%	%	%
ORIGINAL									
2004–05	8.8	12.5	9.1	21.5	19.5	20.6	11.8	17.5	13.0
2005–06	4.3	18.8	5.5	38.5	25.0	32.9	13.3	23.3	15.3
2006–07	7.5	18.0	8.5	27.9	8.5	20.2	14.0	10.9	13.3
2006									
Jun Qtr	15.0	25.1	16.0	16.6	28.2	21.3	15.5	27.4	18.2
Sep Qtr	3.9	–0.5	3.4	–1.3	–21.4	–9.9	2.1	–16.4	–2.4
Dec Qtr	3.9	10.6	4.5	14.6	14.1	14.4	7.3	13.1	8.6
2007									
Mar Qtr	–8.6	–14.8	–9.3	3.0	–5.9	–0.3	–4.6	–8.4	–5.5
Jun Qtr	7.1	9.4	7.3	17.7	7.7	14.2	11.0	8.1	10.4
Sep Qtr	8.9	2.7	8.2	–8.5	–8.2	–8.4	2.0	–5.3	0.5
SEASONALLY ADJUSTED									
2006									
Jun Qtr	5.6	8.8	5.9	9.9	5.9	8.3	7.0	6.6	6.9
Sep Qtr	0.8	1.7	0.9	–1.6	–1.7	–1.6	—	–0.8	–0.2
Dec Qtr	3.7	9.7	4.3	7.9	6.7	7.4	5.0	7.5	5.6
2007									
Mar Qtr	2.9	–3.3	2.3	17.0	–3.6	9.0	7.7	–3.6	5.1
Jun Qtr	–1.8	–5.1	–2.2	5.5	–8.9	0.5	0.9	–7.9	–1.0
Sep Qtr	5.5	5.2	5.5	–2.0	11.8	2.3	2.6	9.9	4.1
TREND									
2006									
Jun Qtr	2.1	7.8	2.6	3.8	4.6	4.1	2.6	5.4	3.2
Sep Qtr	3.5	6.7	3.8	4.0	4.0	4.0	3.6	4.7	3.9
Dec Qtr	2.5	2.7	2.5	5.5	3.8	4.8	3.5	3.5	3.5
2007									
Mar Qtr	1.7	–0.3	1.5	(a)np	(a)np	4.9	(a)np	(a)np	3.0
Jun Qtr	1.8	–1.2	1.5	4.0	4.7	4.2	2.6	3.0	2.7
Sep Qtr	1.7	–1.0	1.5	2.1	3.8	2.7	1.9	2.5	2.0

— nil or rounded to zero (including null cells)

np not available for publication but included in totals where applicable, unless otherwise indicated

(a) Break in series between December 2006 and March 2007.

VALUE OF BUILDING WORK DONE (a), Chain volume measures

	NEW RESIDENTIAL BUILDING		ALTERATIONS AND ADDITIONS		RESIDENTIAL BUILDING		NON-RESIDENTIAL BUILDING		TOTAL BUILDING	
	<i>Private</i>	<i>Total</i>	<i>Private</i>	<i>Total</i>	<i>Private</i>	<i>Total</i>	<i>Private</i>	<i>Total</i>	<i>Private</i>	<i>Total</i>
	\$m	\$m	\$m	\$m	\$m	\$m	\$m	\$m	\$m	\$m
ORIGINAL										
2004-05	34 203.9	34 904.4	6 022.2	6 213.5	40 224.9	41 116.7	16 830.0	21 278.9	57 078.7	62 427.2
2005-06	32 176.5	32 894.0	5 758.6	5 953.3	37 935.1	38 847.3	18 602.7	23 623.2	56 537.8	62 470.5
2006-07	32 403.2	33 031.4	5 982.3	6 178.0	38 385.6	39 209.4	19 947.0	25 764.4	58 332.6	64 973.8
2006										
Jun Qtr	8 096.2	8 271.9	1 458.7	1 506.0	9 555.0	9 778.1	4 834.2	6 300.9	14 389.4	16 078.2
Sep Qtr	8 272.9	8 433.1	1 540.4	1 580.9	9 813.3	10 014.0	4 988.8	6 453.0	14 802.1	16 467.0
Dec Qtr	8 279.0	8 444.3	1 641.3	1 688.8	9 920.3	10 133.1	5 311.7	6 912.3	15 232.0	17 045.4
2007										
Mar Qtr	7 750.1	7 889.4	1 317.4	1 376.5	9 067.5	9 265.9	4 692.7	6 020.3	13 760.3	15 286.1
Jun Qtr	8 101.2	8 264.6	1 483.2	1 531.9	9 584.4	9 796.4	4 953.8	6 378.8	14 538.2	16 175.2
Sep Qtr	8 377.3	8 568.6	1 612.5	1 642.6	9 989.9	10 211.1	5 620.2	7 053.8	15 610.0	17 265.0
SEASONALLY ADJUSTED										
2006										
Jun Qtr	8 004.8	8 183.1	1 467.1	1 506.6	9 472.1	9 689.9	4 847.4	6 248.9	14 319.5	15 938.2
Sep Qtr	8 000.8	8 154.4	1 479.3	1 521.2	9 480.2	9 675.6	4 800.1	6 233.3	14 280.3	15 908.9
Dec Qtr	8 110.5	8 265.5	1 527.9	1 581.4	9 638.4	9 846.9	5 028.0	6 580.9	14 666.5	16 427.8
2007										
Mar Qtr	8 285.6	8 440.0	1 486.9	1 545.9	9 772.4	9 985.8	5 155.0	6 624.9	14 927.5	16 610.7
Jun Qtr	8 006.4	8 171.5	1 488.2	1 529.5	9 494.5	9 701.1	4 963.8	6 325.4	14 458.3	16 026.5
Sep Qtr	8 094.7	8 278.9	1 547.5	1 578.7	9 642.3	9 857.6	5 400.7	6 806.4	15 043.0	16 664.1
TREND										
2006										
Jun Qtr	7 899.9	8 069.8	1 441.0	1 481.8	9 340.9	9 551.6	4 733.1	6 116.3	14 074.2	15 667.6
Sep Qtr	8 037.9	8 198.7	1 485.0	1 530.2	9 522.9	9 728.8	4 894.7	6 367.9	14 417.6	16 096.5
Dec Qtr	8 138.2	8 291.6	1 504.2	1 556.2	9 642.4	9 847.8	4 989.5	6 486.6	14 631.9	16 334.4
2007										
Mar Qtr	8 148.9	8 305.9	1 500.7	1 552.5	9 649.5	9 858.3	5 061.1	6 525.7	14 710.6	16 383.4
Jun Qtr	8 120.3	8 287.6	1 507.6	1 552.0	9 627.8	9 839.5	5 155.3	6 570.3	14 783.2	16 409.6
Sep Qtr	8 067.7	8 246.6	1 520.7	1 555.0	9 588.8	9 801.4	5 259.3	6 623.3	14 848.1	16 427.1

(a) Chain volume measures, reference year 2005-06. See paragraphs 26-29 of the Explanatory Notes.

VALUE OF BUILDING WORK DONE, Chain volume measures(a)—Change from previous period

Period	NEW RESIDENTIAL BUILDING		ALTERATIONS AND ADDITIONS		RESIDENTIAL BUILDING		NON- RESIDENTIAL BUILDING		TOTAL BUILDING	
	Private	Total	Private	Total	Private	Total	Private	Total	Private	Total
	%	%	%	%	%	%	%	%	%	%
ORIGINAL										
2004-05	-0.7	-0.5	—	0.1	-0.6	-0.4	5.3	4.3	1.0	1.1
2005-06	-5.9	-5.8	-4.4	-4.2	-5.7	-5.5	10.5	11.0	-0.9	0.1
2006-07	0.7	0.4	3.9	3.8	1.2	0.9	7.2	9.1	3.2	4.0
2006										
Jun Qtr	11.5	11.4	20.4	19.9	12.7	12.7	16.2	18.2	13.9	14.8
Sep Qtr	2.2	1.9	5.6	5.0	2.7	2.4	3.2	2.4	2.9	2.4
Dec Qtr	0.1	0.1	6.6	6.8	1.1	1.2	6.5	7.1	2.9	3.5
2007										
Mar Qtr	-6.4	-6.6	-19.7	-18.5	-8.6	-8.6	-11.7	-12.9	-9.7	-10.3
Jun Qtr	4.5	4.8	12.6	11.3	5.7	5.7	5.6	6.0	5.7	5.8
Sep Qtr	3.4	3.7	8.7	7.2	4.2	4.2	13.5	10.6	7.4	6.7
SEASONALLY ADJUSTED										
2006										
Jun Qtr	3.0	3.0	7.6	7.0	3.7	3.6	6.3	6.7	4.5	4.8
Sep Qtr	—	-0.4	0.8	1.0	0.1	-0.1	-1.0	-0.3	-0.3	-0.2
Dec Qtr	1.4	1.4	3.3	4.0	1.7	1.8	4.7	5.6	2.7	3.3
2007										
Mar Qtr	2.2	2.1	-2.7	-2.2	1.4	1.4	2.5	0.7	1.8	1.1
Jun Qtr	-3.4	-3.2	0.1	-1.1	-2.8	-2.9	-3.7	-4.5	-3.1	-3.5
Sep Qtr	1.1	1.3	4.0	3.2	1.6	1.6	8.8	7.6	4.0	4.0
TREND										
2006										
Jun Qtr	0.2	0.1	1.9	1.6	0.4	0.3	2.2	3.6	1.0	1.6
Sep Qtr	1.7	1.6	3.1	3.3	1.9	1.9	3.4	4.1	2.4	2.7
Dec Qtr	1.2	1.1	1.3	1.7	1.3	1.2	1.9	1.9	1.5	1.5
2007										
Mar Qtr	0.1	0.2	-0.2	-0.2	0.1	0.1	1.4	0.6	0.5	0.3
Jun Qtr	-0.4	-0.2	0.5	—	-0.2	-0.2	1.9	0.7	0.5	0.2
Sep Qtr	-0.6	-0.5	0.9	0.2	-0.4	-0.4	2.0	0.8	0.4	0.1

— nil or rounded to zero (including null cells)

(a) Chain volume measures, reference year 2005-06. See paragraphs 26-29 of the Explanatory Notes.

VALUE OF BUILDING WORK DONE, Current prices

Period	NEW RESIDENTIAL BUILDING		ALTERATIONS AND ADDITIONS		RESIDENTIAL BUILDING		NON-RESIDENTIAL BUILDING		TOTAL BUILDING	
	Private	Total	Private	Total	Private	Total	Private	Total	Private	Total
	\$m	\$m	\$m	\$m	\$m	\$m	\$m	\$m	\$m	\$m
ORIGINAL										
2004-05	32 537.6	33 192.2	5 808.4	5 991.7	38 346.0	39 183.9	15 848.5	20 002.9	54 194.5	59 186.8
2005-06	32 176.5	32 894.0	5 758.6	5 953.3	37 935.1	38 847.3	18 602.7	23 623.2	56 537.8	62 470.5
2006-07	33 680.7	34 345.7	6 112.4	6 313.3	39 793.0	40 659.0	20 974.5	27 106.8	60 767.5	67 765.8
2006										
Jun Qtr	8 224.9	8 404.7	1 470.8	1 518.7	9 695.7	9 923.4	4 914.8	6 411.8	14 610.6	16 335.1
Sep Qtr	8 487.1	8 653.2	1 559.2	1 600.6	10 046.3	10 253.8	5 130.9	6 638.7	15 177.2	16 892.5
Dec Qtr	8 551.3	8 724.8	1 666.2	1 714.5	10 217.5	10 439.3	5 544.7	7 220.8	15 762.2	17 660.1
2007										
Mar Qtr	8 084.4	8 233.1	1 350.7	1 411.4	9 435.1	9 644.6	4 967.7	6 374.9	14 402.8	16 019.5
Jun Qtr	8 557.8	8 734.6	1 536.3	1 586.8	10 094.1	10 321.3	5 331.2	6 872.4	15 425.3	17 193.8
Sep Qtr	8 965.5	9 174.2	1 688.6	1 720.1	10 654.2	10 894.3	6 140.4	7 716.3	16 794.6	18 610.6
SEASONALLY ADJUSTED										
2006										
Jun Qtr	8 129.2	8 311.4	1 477.4	1 518.2	9 606.6	9 829.6	4 930.9	6 361.7	14 537.5	16 191.3
Sep Qtr	8 213.9	8 373.1	1 496.3	1 539.7	9 710.2	9 912.8	4 944.3	6 422.8	14 654.5	16 335.6
Dec Qtr	8 384.8	8 547.5	1 550.3	1 605.2	9 935.1	10 152.7	5 254.8	6 881.8	15 189.9	17 034.5
2007										
Mar Qtr	8 650.7	8 815.5	1 523.9	1 584.9	10 174.6	10 400.5	5 462.2	7 019.9	15 636.8	17 420.3
Jun Qtr	8 464.4	8 643.2	1 541.0	1 584.3	10 005.5	10 227.5	5 346.5	6 817.9	15 351.9	17 045.3
Sep Qtr	8 672.9	8 873.8	1 620.0	1 653.0	10 292.9	10 526.8	5 907.7	7 454.8	16 200.7	17 981.5
TREND										
2006										
Jun Qtr	8 027.0	8 200.4	1 451.3	1 493.4	9 478.3	9 693.7	4 815.3	6 225.7	14 293.6	15 919.5
Sep Qtr	8 242.4	8 408.8	1 501.1	1 547.7	9 743.6	9 956.5	5 043.5	6 565.5	14 787.1	16 522.0
Dec Qtr	8 419.0	8 580.2	1 528.5	1 582.2	9 947.5	10 162.4	5 211.8	6 778.2	15 159.3	16 940.6
2007										
Mar Qtr	8 516.0	8 683.6	1 538.0	1 591.6	10 054.0	10 275.2	5 367.4	6 921.9	15 421.4	17 197.1
Jun Qtr	8 584.6	8 765.5	1 561.0	1 607.3	10 145.6	10 372.8	5 552.3	7 080.0	15 697.9	17 452.8
Sep Qtr	8 633.9	8 828.3	1 592.2	1 628.4	10 226.1	10 456.6	5 746.3	7 252.5	15 972.4	17 709.1

VALUE OF BUILDING WORK DONE, Current Prices—Change from previous period

Period	NEW RESIDENTIAL BUILDING		ALTERATIONS AND ADDITIONS		RESIDENTIAL BUILDING		NON- RESIDENTIAL BUILDING		TOTAL BUILDING	
	Private	Total	Private	Total	Private	Total	Private	Total	Private	Total
	%	%	%	%	%	%	%	%	%	%
ORIGINAL										
2004-05	6.2	6.5	5.1	5.3	6.0	6.3	16.1	15.0	8.8	9.1
2005-06	-1.1	-0.9	-0.9	-0.6	-1.1	-0.9	17.4	18.1	4.3	5.5
2006-07	4.7	4.4	6.1	6.0	4.9	4.7	12.7	14.7	7.5	8.5
2006										
Jun Qtr	12.5	12.5	20.8	20.3	13.7	13.7	17.6	19.7	15.0	16.0
Sep Qtr	3.2	3.0	6.0	5.4	3.6	3.3	4.4	3.5	3.9	3.4
Dec Qtr	0.8	0.8	6.9	7.1	1.7	1.8	8.1	8.8	3.9	4.5
2007										
Mar Qtr	-5.5	-5.6	-18.9	-17.7	-7.7	-7.6	-10.4	-11.7	-8.6	-9.3
Jun Qtr	5.9	6.1	13.7	12.4	7.0	7.0	7.3	7.8	7.1	7.3
Sep Qtr	4.8	5.0	9.9	8.4	5.5	5.6	15.2	12.3	8.9	8.2
SEASONALLY ADJUSTED										
2006										
Jun Qtr	4.0	4.0	8.0	7.4	4.6	4.5	7.5	8.1	5.6	5.9
Sep Qtr	1.0	0.7	1.3	1.4	1.1	0.8	0.3	1.0	0.8	0.9
Dec Qtr	2.1	2.1	3.6	4.3	2.3	2.4	6.3	7.1	3.7	4.3
2007										
Mar Qtr	3.2	3.1	-1.7	-1.3	2.4	2.4	3.9	2.0	2.9	2.3
Jun Qtr	-2.2	-2.0	1.1	—	-1.7	-1.7	-2.1	-2.9	-1.8	-2.2
Sep Qtr	2.5	2.7	5.1	4.3	2.9	2.9	10.5	9.3	5.5	5.5
TREND										
2006										
Jun Qtr	1.2	1.2	2.3	2.0	1.4	1.3	3.4	4.8	2.1	2.6
Sep Qtr	2.7	2.5	3.4	3.6	2.8	2.7	4.7	5.5	3.5	3.8
Dec Qtr	2.1	2.0	1.8	2.2	2.1	2.1	3.3	3.2	2.5	2.5
2007										
Mar Qtr	1.2	1.2	0.6	0.6	1.1	1.1	3.0	2.1	1.7	1.5
Jun Qtr	0.8	0.9	1.5	1.0	0.9	0.9	3.4	2.3	1.8	1.5
Sep Qtr	0.6	0.7	2.0	1.3	0.8	0.8	3.5	2.4	1.7	1.5

— nil or rounded to zero (including null cells)

CONSTRUCTION WORK DONE, States and territories—Chain volume measures(a): Original

	NSW	Vic.	Qld	SA	WA	Tas.	NT	ACT	Aust.
<i>Period</i>	\$m	\$m	\$m	\$m	\$m	\$m	\$m	\$m	\$m
BUILDING WORK DONE									
2004–05	18 668.1	16 637.5	14 391.8	3 621.6	6 442.4	918.4	581.1	1 061.1	62 427.2
2005–06	17 434.4	16 302.0	15 059.8	3 525.8	7 008.1	959.1	658.8	1 522.5	62 470.5
2006–07	16 839.7	16 927.6	16 313.3	3 543.7	7 892.7	930.9	684.1	1 841.8	64 973.8
2006									
Jun Qtr	4 327.8	4 142.8	3 925.5	906.8	1 880.1	237.2	188.0	480.7	16 078.2
Sep Qtr	4 104.6	4 494.7	4 149.2	939.1	1 941.5	222.7	180.3	435.0	16 467.0
Dec Qtr	4 390.5	4 408.6	4 407.6	897.1	1 951.9	236.3	176.1	577.3	17 045.4
2007									
Mar Qtr	4 247.5	3 755.9	3 715.7	857.7	1 900.7	221.8	173.4	413.4	15 286.1
Jun Qtr	4 097.0	4 268.4	4 040.8	849.8	2 098.5	250.2	154.3	416.2	16 175.2
Sep Qtr	4 350.6	4 803.0	4 114.5	928.2	2 241.6	242.5	169.2	415.5	17 265.0
ENGINEERING WORK DONE									
2004–05	9 824.9	6 197.6	7 544.2	2 077.7	6 551.5	652.2	1 809.8	259.3	34 938.3
2005–06	10 523.6	7 406.0	9 678.2	1 827.9	11 490.3	854.1	1 876.1	269.6	43 925.9
2006–07	9 799.6	6 635.3	11 669.5	2 290.7	14 732.6	780.1	1 536.1	265.3	47 709.2
2006									
Jun Qtr	2 683.3	1 865.3	2 695.2	486.0	3 892.4	267.7	402.4	72.3	12 358.1
Sep Qtr	2 204.6	1 610.3	2 690.2	483.7	2 982.7	124.7	475.9	64.0	10 636.1
Dec Qtr	2 326.3	1 701.0	2 790.9	602.1	3 929.4	165.0	413.8	80.5	12 008.9
2007									
Mar Qtr	2 469.6	1 574.7	2 841.3	578.6	3 643.4	239.1	351.9	59.7	11 758.4
Jun Qtr	2 799.1	1 749.3	3 347.1	626.2	4 177.1	251.3	294.5	61.1	13 305.8
Sep Qtr	2 127.2	1 525.7	3 186.7	501.2	4 265.8	139.8	284.5	91.1	12 122.1
CONSTRUCTION WORK DONE									
2004–05	28 495.1	22 832.8	21 928.5	5 692.5	12 863.3	1 567.1	2 382.3	1 320.9	97 375.2
2005–06	27 958.0	23 708.0	24 738.0	5 353.7	18 498.4	1 813.2	2 534.9	1 792.2	106 396.4
2006–07	26 639.3	23 562.9	27 982.8	5 834.4	22 625.2	1 711.1	2 220.2	2 107.1	112 683.0
2006									
Jun Qtr	7 010.1	6 010.5	6 620.3	1 393.2	5 801.0	504.7	588.3	552.7	28 433.4
Sep Qtr	6 309.2	6 105.0	6 839.5	1 422.8	4 924.2	347.4	656.2	499.0	27 103.2
Dec Qtr	6 716.8	6 109.6	7 198.4	1 499.3	5 881.3	401.3	589.9	657.8	29 054.3
2007									
Mar Qtr	6 717.2	5 330.6	6 557.0	1 436.3	5 544.1	460.9	525.3	473.1	27 044.6
Jun Qtr	6 896.1	6 017.8	7 387.9	1 476.1	6 275.7	501.5	448.8	477.3	29 481.0
Sep Qtr	6 477.8	6 328.7	7 301.1	1 429.4	6 507.4	382.3	453.8	506.5	29 387.0

(a) Chain volume measures, reference year 2005–06. See paragraphs 26–29 of the Explanatory Notes.

	NSW	Vic.	Qld	SA	WA	Tas.	NT	ACT	Aust.
<i>Period</i>	%	%	%	%	%	%	%	%	%
BUILDING WORK DONE									
2004–05	-5.2	0.7	5.8	11.4	5.9	10.9	17.1	-2.1	1.1
2005–06	-6.6	-2.0	4.6	-2.6	8.8	4.4	13.4	43.5	0.1
2006–07	-3.4	3.8	8.3	0.5	12.6	-2.9	3.8	21.0	4.0
2006									
Jun Qtr	7.8	20.4	19.0	7.0	13.2	5.0	33.6	23.3	14.8
Sep Qtr	-5.2	8.5	5.7	3.6	3.3	-6.1	-4.1	-9.5	2.4
Dec Qtr	7.0	-1.9	6.2	-4.5	0.5	6.1	-2.3	32.7	3.5
2007									
Mar Qtr	-3.3	-14.8	-15.7	-4.4	-2.6	-6.1	-1.5	-28.4	-10.3
Jun Qtr	-3.5	13.6	8.8	-0.9	10.4	12.8	-11.0	0.7	5.8
Sep Qtr	6.2	12.5	1.8	9.2	6.8	-3.1	9.7	-0.2	6.7
ENGINEERING WORK DONE									
2004–05	12.6	13.9	20.9	5.7	19.9	16.0	0.6	-2.5	14.6
2005–06	7.1	19.5	28.3	-12.0	75.4	31.0	3.7	4.0	25.7
2006–07	-6.9	-10.4	20.6	25.3	28.2	-8.7	-18.1	-1.6	8.6
2006									
Jun Qtr	14.6	0.8	8.8	18.1	44.6	3.4	-11.7	-7.9	17.0
Sep Qtr	-17.8	-13.7	-0.2	-0.5	-23.4	-53.4	18.3	-11.5	-13.9
Dec Qtr	5.5	5.6	3.7	24.5	31.7	32.3	-13.0	25.8	12.9
2007									
Mar Qtr	6.2	-7.4	1.8	-3.9	-7.3	44.9	-15.0	-25.8	-2.1
Jun Qtr	13.3	11.1	17.8	8.2	14.6	5.1	-16.3	2.3	13.2
Sep Qtr	-24.0	-12.8	-4.8	-20.0	2.1	-44.4	-3.4	49.0	-8.9
CONSTRUCTION WORK DONE									
2004–05	0.4	4.0	10.9	9.3	13.0	13.4	3.9	-2.1	5.6
2005–06	-1.9	3.8	12.8	-6.0	43.8	15.7	6.4	35.7	9.3
2006–07	-4.7	-0.6	13.1	9.0	22.3	-5.6	-12.4	17.6	5.9
2006									
Jun Qtr	10.2	13.7	14.6	10.7	33.3	4.3	-1.6	17.9	15.7
Sep Qtr	-10.0	1.6	3.3	2.1	-15.1	-31.2	11.5	-9.7	-4.7
Dec Qtr	6.5	0.1	5.2	5.4	19.4	15.5	-10.1	31.8	7.2
2007									
Mar Qtr	—	-12.8	-8.9	-4.2	-5.7	14.9	-11.0	-28.1	-6.9
Jun Qtr	2.7	12.9	12.7	2.8	13.2	8.8	-14.6	0.9	9.0
Sep Qtr	-6.1	5.2	-1.2	-3.2	3.7	-23.8	1.1	6.1	-0.3

— nil or rounded to zero (including null cells)

(a) Chain volume measures, reference year 2005–06. See paragraphs 26–29 of the Explanatory Notes.

	NSW	Vic.	Qld	SA	WA	Tas.	NT	ACT	Aust.
<i>Period</i>	\$m	\$m	\$m	\$m	\$m	\$m	\$m	\$m	\$m
BUILDING WORK DONE									
2004–05	18 013.3	16 313.8	13 389.2	3 444.6	5 664.5	865.5	519.0	976.8	59 186.8
2005–06	17 434.4	16 302.0	15 059.8	3 525.8	7 008.1	959.1	658.8	1 522.5	62 470.5
2006–07	17 164.5	17 219.5	17 256.3	3 646.9	8 816.2	978.4	754.9	1 929.0	67 765.8
2006									
Jun Qtr	4 361.4	4 141.0	4 019.5	918.0	1 967.6	241.1	194.1	492.3	16 335.1
Sep Qtr	4 168.0	4 497.3	4 299.9	957.0	2 101.2	229.3	191.0	448.8	16 892.5
Dec Qtr	4 471.5	4 441.5	4 623.8	919.0	2 163.8	246.6	192.1	601.9	17 660.1
2007									
Mar Qtr	4 332.5	3 839.6	3 954.1	885.1	2 144.3	234.2	194.5	435.2	16 019.5
Jun Qtr	4 192.5	4 441.1	4 378.6	885.8	2 406.9	268.4	177.4	443.1	17 193.8
Sep Qtr	4 485.9	5 103.9	4 519.1	981.4	2 614.3	264.1	197.9	444.0	18 610.6
ENGINEERING WORK DONE									
2004–05	9 340.4	5 911.3	7 087.5	1 965.1	6 184.4	596.2	1 731.1	247.3	33 063.3
2005–06	10 523.6	7 406.0	9 678.2	1 827.9	11 490.2	854.1	1 876.1	269.6	43 925.8
2006–07	10 825.1	7 216.5	12 946.8	2 544.7	16 407.1	885.9	1 698.3	290.9	52 815.3
2006									
Jun Qtr	2 760.8	1 921.5	2 791.4	500.3	4 030.0	280.0	418.7	74.6	12 777.3
Sep Qtr	2 371.8	1 713.5	2 925.6	525.9	3 250.1	138.4	517.7	68.8	11 511.9
Dec Qtr	2 527.5	1 834.0	3 076.5	659.1	4 350.8	185.2	455.6	86.6	13 175.3
2007									
Mar Qtr	2 756.7	1 725.2	3 173.0	655.2	4 084.8	274.0	394.6	67.4	13 131.0
Jun Qtr	3 169.0	1 943.8	3 771.6	704.5	4 721.4	288.3	330.4	68.1	14 997.1
Sep Qtr	2 412.2	1 716.0	3 617.5	568.8	4 836.5	161.2	323.9	104.3	13 740.5
CONSTRUCTION WORK DONE									
2004–05	27 353.8	22 225.2	20 476.7	5 409.7	11 848.9	1 461.7	2 250.1	1 224.1	92 250.1
2005–06	27 958.0	23 708.0	24 738.0	5 353.7	18 498.4	1 813.2	2 534.9	1 792.2	106 396.4
2006–07	27 989.6	24 436.0	30 203.1	6 191.6	25 223.3	1 864.4	2 453.3	2 219.9	120 581.1
2006									
Jun Qtr	7 122.2	6 062.5	6 810.9	1 418.4	5 997.7	521.1	612.8	566.9	29 112.5
Sep Qtr	6 539.8	6 210.9	7 225.5	1 482.8	5 351.3	367.7	708.7	517.6	28 404.4
Dec Qtr	6 999.0	6 275.4	7 700.2	1 578.1	6 514.6	431.7	647.7	688.5	30 835.4
2007									
Mar Qtr	7 089.2	5 564.8	7 127.1	1 540.4	6 229.1	508.2	589.1	502.6	29 150.5
Jun Qtr	7 361.6	6 384.9	8 150.2	1 590.2	7 128.3	556.7	507.8	511.2	32 190.9
Sep Qtr	6 898.1	6 819.8	8 136.6	1 550.3	7 450.8	425.2	521.8	548.4	32 351.1

Period NSW Vic. Qld SA WA Tas. NT ACT Aust.

BUILDING WORK DONE

2004–05	2.5	6.6	16.0	16.8	17.5	20.9	29.4	3.5	9.1
2005–06	-3.2	-0.1	12.5	2.4	23.7	10.8	26.9	55.9	5.5
2006–07	-1.5	5.6	14.6	3.4	25.8	2.0	14.6	26.7	8.5
2006									
Jun Qtr	8.3	20.4	21.0	7.8	16.6	6.1	36.8	25.5	16.0
Sep Qtr	-4.4	8.6	7.0	4.2	6.8	-4.9	-1.6	-8.8	3.4
Dec Qtr	7.3	-1.2	7.5	-4.0	3.0	7.5	0.6	34.1	4.5
2007									
Mar Qtr	-3.1	-13.5	-14.5	-3.7	-0.9	-5.0	1.2	-27.7	-9.3
Jun Qtr	-3.2	15.7	10.7	0.1	12.2	14.6	-8.8	1.8	7.3
Sep Qtr	7.0	14.9	3.2	10.8	8.6	-1.6	11.6	0.2	8.2

ENGINEERING WORK DONE

2004–05	18.4	18.6	27.9	11.4	26.7	22.8	6.9	1.0	20.6
2005–06	12.7	25.3	36.6	-7.0	85.8	43.3	8.4	9.0	32.9
2006–07	2.9	-2.6	33.8	39.2	42.8	3.7	-9.5	7.9	20.2
2006									
Jun Qtr	17.6	3.8	13.1	21.9	51.1	8.6	-7.9	-4.8	21.3
Sep Qtr	-14.1	-10.8	4.8	5.1	-19.4	-50.6	23.7	-7.8	-9.9
Dec Qtr	6.6	7.0	5.2	25.3	33.9	33.7	-12.0	25.9	14.4
2007									
Mar Qtr	9.1	-5.9	3.1	-0.6	-6.1	48.0	-13.4	-22.2	-0.3
Jun Qtr	15.0	12.7	18.9	7.5	15.6	5.2	-16.3	1.0	14.2
Sep Qtr	-23.9	-11.7	-4.1	-19.2	2.4	-44.1	-2.0	53.3	-8.4

CONSTRUCTION WORK DONE

2004–05	7.4	9.5	19.9	14.8	22.1	21.7	11.3	3.0	13.0
2005–06	2.2	6.7	20.8	-1.0	56.1	24.0	12.7	46.4	15.3
2006–07	0.1	3.1	22.1	15.6	36.4	2.8	-3.2	23.9	13.3
2006									
Jun Qtr	11.8	14.6	17.6	12.4	37.8	7.4	2.7	20.4	18.2
Sep Qtr	-8.2	2.4	6.1	4.5	-10.8	-29.4	15.6	-8.7	-2.4
Dec Qtr	7.0	1.0	6.6	6.4	21.7	17.4	-8.6	33.0	8.6
2007									
Mar Qtr	1.3	-11.3	-7.4	-2.4	-4.4	17.7	-9.0	-27.0	-5.5
Jun Qtr	3.8	14.7	14.4	3.2	14.4	9.5	-13.8	1.7	10.4
Sep Qtr	-6.3	6.8	-0.2	-2.5	4.5	-23.6	2.8	7.3	0.5

CONSTRUCTION WORK DONE, States and territories—Chain volume measures(a)

	NSW	Vic.	Qld	SA	WA	Tas.	NT	ACT
<i>Period</i>	\$m	\$m	\$m	\$m	\$m	\$m	\$m	\$m
ORIGINAL								
2004–05	28 495.1	22 832.8	21 928.5	5 692.5	12 863.3	1 567.1	2 382.3	1 320.9
2005–06	27 958.0	23 708.0	24 738.0	5 353.7	18 498.4	1 813.2	2 534.9	1 792.2
2006–07	26 639.3	23 562.9	27 982.8	5 834.4	22 625.2	1 711.1	2 220.2	2 107.1
2006								
Jun Qtr	7 010.1	6 010.5	6 620.3	1 393.2	5 801.0	504.7	588.3	552.7
Sep Qtr	6 309.2	6 105.0	6 839.5	1 422.8	4 924.2	347.4	656.2	499.0
Dec Qtr	6 716.8	6 109.6	7 198.4	1 499.3	5 881.3	401.3	589.9	657.8
2007								
Mar Qtr	6 717.2	5 330.6	6 557.0	1 436.3	5 544.1	460.9	525.3	473.1
Jun Qtr	6 896.1	6 017.8	7 387.9	1 476.1	6 275.7	501.5	448.8	477.3
Sep Qtr	6 477.8	6 328.7	7 301.1	1 429.4	6 507.4	382.3	453.8	506.5
SEASONALLY ADJUSTED								
2006								
Jun Qtr	6 722.0	5 888.3	6 537.7	1 361.1	5 698.6	455.1	590.0	530.9
Sep Qtr	6 334.5	5 976.6	6 673.0	1 437.8	4 969.5	387.8	636.8	493.6
Dec Qtr	6 607.6	5 919.4	6 875.6	1 443.7	5 622.6	413.6	573.1	666.4
2007								
Mar Qtr	7 106.3	5 766.9	7 148.0	1 521.4	5 861.4	456.1	558.3	493.0
Jun Qtr	6 590.9	5 899.9	7 286.2	1 431.4	6 171.7	453.6	452.0	454.1
Sep Qtr	6 508.6	6 152.3	7 105.7	1 440.5	6 543.9	429.7	441.8	499.4
TREND								
2006								
Jun Qtr	6 553.4	5 865.4	6 490.7	1 367.9	5 184.9	439.7	620.2	519.2
Sep Qtr	6 542.1	5 901.3	6 703.4	1 422.7	5 370.8	418.1	611.5	562.9
Dec Qtr	6 678.2	5 888.9	6 921.2	1 466.3	5 542.9	418.4	585.1	564.5
2007								
Mar Qtr	6 776.6	5 863.6	7 098.1	1 474.2	5 838.1	438.1	535.4	531.2
Jun Qtr	6 732.4	5 929.9	7 197.4	1 460.9	6 208.8	448.2	479.2	489.9
Sep Qtr	6 574.5	6 051.1	7 225.0	1 442.5	6 472.9	444.2	435.5	462.0

(a) Reference year for Chain Volume Measures is 2005–06. See paragraphs 26–29 of the Explanatory Notes.

CONSTRUCTION WORK DONE, States and Territories—Chain volume measures—Change from previous period(a)

	NSW	Vic.	Qld	SA	WA	Tas.	NT	ACT
Period	%	%	%	%	%	%	%	%

ORIGINAL

2004–05	0.4	4.0	10.9	9.3	13.0	13.4	3.9	–2.1
2005–06	–1.9	3.8	12.8	–6.0	43.8	15.7	6.4	35.7
2006–07	–4.7	–0.6	13.1	9.0	22.3	–5.6	–12.4	17.6
2006								
Jun Qtr	10.2	13.7	14.6	10.7	33.3	4.3	–1.6	17.9
Sep Qtr	–10.0	1.6	3.3	2.1	–15.1	–31.2	11.5	–9.7
Dec Qtr	6.5	0.1	5.2	5.4	19.4	15.5	–10.1	31.8
2007								
Mar Qtr	—	–12.8	–8.9	–4.2	–5.7	14.9	–11.0	–28.1
Jun Qtr	2.7	12.9	12.7	2.8	13.2	8.8	–14.6	0.9
Sep Qtr	–6.1	5.2	–1.2	–3.2	3.7	–23.8	1.1	6.1

SEASONALLY ADJUSTED

2006								
Jun Qtr	–0.1	3.7	3.9	2.5	23.6	–5.3	–8.4	8.6
Sep Qtr	–5.8	1.5	2.1	5.6	–12.8	–14.8	7.9	–7.0
Dec Qtr	4.3	–1.0	3.0	0.4	13.1	6.7	–10.0	35.0
2007								
Mar Qtr	7.5	–2.6	4.0	5.4	4.2	10.3	–2.6	–26.0
Jun Qtr	–7.3	2.3	1.9	–5.9	5.3	–0.5	–19.0	–7.9
Sep Qtr	–1.2	4.3	–2.5	0.6	6.0	–5.3	–2.3	10.0

TREND

2006								
Jun Qtr	–3.7	–0.1	3.5	3.2	6.8	–4.3	–1.2	11.5
Sep Qtr	–0.2	0.6	3.3	4.0	3.6	–4.9	–1.4	8.4
Dec Qtr	2.1	–0.2	3.2	3.1	3.2	0.1	–4.3	0.3
2007								
Mar Qtr	1.5	–0.4	2.6	0.5	5.3	4.7	–8.5	–5.9
Jun Qtr	–0.7	1.1	1.4	–0.9	6.3	2.3	–10.5	–7.8
Sep Qtr	–2.3	2.0	0.4	–1.3	4.3	–0.9	–9.1	–5.7

— nil or rounded to zero (including null cells)

(a) Reference year for Chain Volume Measures is 2005–06. See paragraphs 26–29 of the Explanatory Notes.

BUILDING ACTIVITY, WORK IN THE PIPELINE—Current prices: **Original**

	<i>New houses</i>	<i>New other residential building</i>	<i>New residential building</i>	<i>Alterations and additions to residential building</i>	<i>Total residential building</i>	<i>Non-residential building</i>	<i>Total building</i>
<i>Period</i>	\$m	\$m	\$m	\$m	\$m	\$m	\$m
WORK YET TO BE DONE AT END OF QUARTER (a)							
2006							
Jun Qtr	7 123.1	6 541.4	13 664.5	1 618.3	15 282.9	12 079.3	27 362.1
Sep Qtr	7 778.6	6 315.8	14 094.4	1 836.4	15 930.8	12 557.7	28 488.5
Dec Qtr	7 995.2	6 824.5	14 819.7	1 753.0	16 572.7	13 276.6	29 849.3
2007							
Mar Qtr	8 055.2	6 630.8	14 686.0	1 695.0	16 381.0	14 596.7	30 977.7
Jun Qtr	8 217.4	6 682.3	14 899.7	1 878.1	16 777.8	15 133.4	31 911.2
Sep Qtr	8 671.2	7 109.6	15 780.8	2 060.1	17 841.0	14 673.1	32 514.1
WORK APPROVED BUT NOT YET COMMENCED AT END OF QUARTER (a)							
2006							
Jun Qtr	2 913.9	1 875.7	4 789.6	891.9	5 681.4	2 195.7	7 877.1
Sep Qtr	2 856.9	2 037.6	4 894.5	851.3	5 745.8	2 017.7	7 763.5
Dec Qtr	3 094.0	2 102.9	5 196.9	943.3	6 140.2	2 142.3	8 282.4
2007							
Mar Qtr	2 565.7	2 159.3	4 725.0	844.9	5 569.9	2 181.1	7 751.0
Jun Qtr	2 822.8	2 372.5	5 195.3	883.1	6 078.4	2 226.9	8 305.3
Sep Qtr	2 855.1	2 073.4	4 928.5	870.2	5 798.7	2 074.8	7 873.5
WORK IN THE PIPELINE AT END OF QUARTER (a)							
2006							
Jun Qtr	10 037.0	8 417.1	18 454.1	2 510.2	20 964.3	14 274.9	35 239.2
Sep Qtr	10 635.6	8 353.4	18 988.9	2 687.6	21 676.6	14 575.4	36 252.0
Dec Qtr	11 089.3	8 927.4	20 016.6	2 696.3	22 712.9	15 418.8	38 131.7
2007							
Mar Qtr	10 620.9	8 790.1	19 411.0	2 539.9	21 950.9	16 777.8	38 728.7
Jun Qtr	11 040.2	9 054.7	20 094.9	2 761.3	22 856.2	17 360.3	40 216.5
Sep Qtr	11 526.3	9 183.0	20 709.3	2 930.4	23 639.7	16 747.9	40 387.6

(a) See Glossary for definitions.

<i>Period</i>	<i>NSW</i>	<i>Vic.</i>	<i>Qld</i>	<i>SA</i>	<i>WA</i>	<i>Tas., NT & ACT</i>	<i>Aust.</i>
NEW HOUSES							
2006							
Jun Qtr	4 382	3 144	1 779	1 450	2 687	362	13 805
Sep Qtr	4 425	2 793	1 657	1 557	2 654	386	13 472
Dec Qtr	4 342	3 048	1 930	1 472	2 567	439	13 798
2007							
Mar Qtr	3 741	2 614	1 446	1 410	1 766	333	11 311
Jun Qtr	4 092	2 323	1 979	1 255	1 998	322	11 970
Sep Qtr	4 306	2 257	1 892	1 179	1 972	309	11 916
NEW OTHER RESIDENTIAL BUILDING							
2006							
Jun Qtr	6 598	907	1 446	1 307	481	49	10 788
Sep Qtr	6 964	1 024	1 523	1 441	547	214	11 712
Dec Qtr	7 424	754	1 342	1 136	454	223	11 332
2007							
Mar Qtr	7 238	701	1 223	1 410	626	225	11 423
Jun Qtr	7 219	1 042	1 115	986	559	225	11 148
Sep Qtr	6 055	968	1 672	872	624	171	10 361
TOTAL DWELLINGS (a)							
2006							
Jun Qtr	11 465	4 104	3 243	2 808	3 186	438	25 244
Sep Qtr	11 868	3 880	3 203	3 016	3 208	605	25 778
Dec Qtr	12 068	3 936	3 298	2 631	3 053	670	25 657
2007							
Mar Qtr	11 185	3 460	2 688	2 840	2 434	571	23 178
Jun Qtr	11 574	3 492	3 109	2 264	2 572	559	23 570
Sep Qtr	10 603	3 290	3 582	2 073	2 623	491	22 662

(a) Includes Conversions etc.

EXPLANATORY NOTES

INTRODUCTION

1 This publication contains preliminary estimates of building and engineering construction work done during the current quarter and revised estimates for the previous two quarters. The estimates of building work done and engineering work done are from the quarterly Building Activity Survey and the quarterly Engineering Construction Survey respectively. Estimates of work done are based upon a response from each survey of approximately 80% of the value of work done during the current quarter. More comprehensive and updated results will be available shortly in *Building Activity, Australia* (cat. no. 8752.0) and *Engineering Construction Activity, Australia* (cat. no. 8762.0).

SCOPE AND COVERAGE

2 The scope of the Building Activity Survey is building activity which includes construction of new buildings and alterations and additions to existing buildings.

3 The building statistics were compiled on the basis of returns collected from builders and other individuals and organisations engaged in building activity. From the September quarter 2005, the quarterly survey consists of:

- a sample survey of private sector building jobs involving residential building jobs valued at \$50,000 or more and non-residential building jobs valued at \$250,000 or more
- a complete enumeration of all such public sector building jobs
- statistical estimates based on building approvals for residential building jobs valued at \$10,000 or more but less than \$50,000, and non-residential building jobs valued at \$50,000 or more but less than \$250,000.

4 Building jobs included in each quarter in the Building Activity Survey comprise those jobs selected in previous quarters which have not been completed (or commenced) by the end of the previous quarter and those jobs newly selected in the current quarter. The population list from which jobs are selected for inclusion comprises all approved building jobs which were notified to the ABS (refer paragraph 3) up to but not including the last month of the reference quarter (i.e. up to the end of August in respect of the September quarter survey). This introduces a lag to the statistics in respect of those jobs notified and commenced in the last month of the reference quarter (i.e. for the month of September in respect of the September quarter survey). For example, jobs which were notified as approved in the month of June and which actually commenced in that month are shown as commencements in the September quarter. Similarly, building jobs which were notified in the month of September and which actually commenced in that month are shown as commencements in the December quarter.

5 The scope of the Engineering Construction Survey is the value of all engineering construction work undertaken in Australia. Where projects include elements of both building and engineering construction every effort is taken to exclude the building component from the engineering construction statistics.

STATISTICAL UNIT

6 In the Engineering Construction Survey, the statistical unit used to represent businesses, and for which statistics are reported, is the Australian Business Number (ABN) unit, in most cases. The ABN unit is the business unit which has registered for an ABN, and thus appears on the Australian Taxation Office (ATO) administered Australian Business Register. This unit is suitable for Australian Bureau of Statistics statistical needs when the business is simple in structure. For more significant and diverse businesses where the ABN unit is not suitable for Australian Bureau of Statistics statistical needs, the statistical unit used is the Type of Activity Unit (TAU). A TAU is comprised of one or more business entities, sub-entities or branches of a business entity within an enterprise group that can report production and employment data for similar economic activities. When a minimum set of data items is available, a TAU is created which covers all the operations within an industry subdivision – and the TAU is classified to the relevant subdivision of the *Australian and New Zealand Standard Industrial*

EXPLANATORY NOTES *continued*

STATISTICAL UNIT *continued*

Classification(ANZSIC). Where a business cannot supply adequate data for each industry, a TAU is formed which contains activity in more than one industry subdivision and the TAU is classified to the predominant ANZSIC subdivision.

7 Further details about the ABS economic statistical units used in the Engineering Construction Survey, and in other ABS economic surveys (both sample surveys and censuses), can be found in Chapter 2 of the *Standard Economic Sector Classifications of Australia (SESCA) 2002* (cat. no. 1218.0).

RELATIONSHIP WITH NATIONAL ACCOUNTS

8 Data on the value of work done on the construction of new residential buildings, alterations and additions to residential buildings, private sector non-residential buildings and the value of engineering construction activity are the major sources of data which are used to compile the national accounts estimates for private gross fixed capital formation on dwellings, and other buildings and structures. However, there are some adjustments to the survey data which are made in the process of compiling these national accounts series. Allowances are made for the value of activity which is out of scope of the Building Activity Survey and the Engineering Construction Survey. Such activity includes work done on projects which fall below the size cut-offs used for the Building Activity survey and also the value of building work done which is undertaken without obtaining a building permit, either because such a permit is not required or because the requisite permit is not obtained. The national accounts estimates also make allowances for purchases (less sales) of buildings and other structures from (to) the public sector.

TREATMENT OF THE GST

9 Statistics on the value of work (current prices) show residential building work done on a GST inclusive basis and non-residential work and engineering construction work done on a GST exclusive basis. This approach is consistent with that adopted in the Australian National Accounts which is based on the conceptual framework described in the 1993 edition of the international statistical standard System of National Accounts (SNA93).

10 SNA93 requires value added taxes (VAT), such as the GST, to be recorded on a net basis where:

- (a) both outputs of goods and services and imports are valued excluding invoiced VAT
- (b) purchases of goods and services are recorded including non-deductible VAT.

11 Under the net system, VAT is recorded as being payable by purchasers, not sellers, and then only by those purchasers who are not able to deduct it. Almost all VAT is therefore recorded in the SNA93 as being paid on final uses – mainly on household consumption. Small amounts of VAT, may however, be paid by businesses in respect of certain kinds of purchases on which VAT may not be deductible.

12 The ABS records value of work done inclusive of GST in respect of residential construction and exclusive of GST in respect of non-residential construction and engineering construction. Purchasers of residential structures are unable to deduct GST from the purchase price. For non-residential structures and engineering construction, the reverse is true in most circumstances.

13 Total construction work is derived by adding total building work and total engineering construction work. To derive total building activity it is appropriate to add the residential and non-residential components. Valuation of the components of the total is consistent, since, for both components, the value of work done is recorded inclusive of non-deductible GST paid by the purchaser. As such, total building activity and total construction includes the non-deductible GST payable on residential building.

EXPLANATORY NOTES *continued*

TREATMENT OF THE GST *continued*

14 As estimates for engineering work are provided on a GST exclusive basis, and the majority of construction materials used were exempt from Wholesale Sales Tax, the introduction of the GST had little direct effect on the estimates of engineering construction.

CLASSIFICATION

15 *Ownership.* The ownership of a building is classified as either *private sector* or *public sector*, according to the sector of the intended owner of the completed building as evident at the time of approval. Engineering projects are classified as either *private sector* or *public sector* according to the expected ownership of the project at the time of completion.

16 Building jobs are classified both by the TYPE OF BUILDING (e.g. 'residential', 'non-residential') and by the TYPE OF WORK involved (e.g. 'new' and 'alterations and additions'). These classifications are used in conjunction with each other and are defined in the Glossary.

RELIABILITY OF THE ESTIMATES

17 The estimates of engineering activity are based on a sample survey as are the estimates of private sector building activity. A complete enumeration of public sector building activity is done. Because data are not collected for all engineering jobs nor for all building jobs, the published estimates are subject to sampling variability. Relative standard errors give a measure of this variability and therefore indicate the degree of confidence that can be attached to the data.

18 Relative standard errors for the value of work done in this quarter are given below. There is 67% confidence that the actual value would be within one standard error of the sample estimate, and 95% confidence that it lies within two standard errors.

AUSTRALIA

	%
New private residential building	1.1
Total private residential building	0.9
Private non-residential building	0.8
Total private building	0.6
Total residential building	0.9
Total non-residential building	0.7
Total building	0.6
Engineering for the private sector	1.5
Total engineering	1.3

STATES AND TERRITORIES

	Total building	Total engineering
	%	%
NSW	1.0	3.1
Vic.	1.3	4.2
Qld	1.4	2.9
SA	1.6	3.9
WA	1.6	1.8
Tas.	1.7	5.4
NT	1.2	2.1
ACT	2.0	7.5

EXPLANATORY NOTES *continued*

SEASONAL ADJUSTMENT

19 In the seasonally adjusted series, account has been taken of normal seasonal factors, 'trading day' effects arising from the varying numbers of working days in a quarter and the effect of movement in the date of Easter which may, in successive years, affect figures for different quarters.

20 Since seasonally adjusted statistics reflect both irregular and trend movements, an upward or downward movement in a seasonally adjusted series does not necessarily indicate a change of trend. Particular care should therefore be taken in interpreting individual quarter-to-quarter movements.

21 From the June quarter 2003, the seasonally adjusted estimates are produced by the concurrent seasonal adjustment method which takes account of the latest available original estimates. The concurrent seasonal adjustment methodology replaces the forward factor methodology previously used, when seasonal factors were only revised following an annual re-analysis. The concurrent method improves the estimation of seasonal factors and, therefore, the seasonally adjusted and trend estimates for the current and previous quarters. As a result, revisions to the seasonally adjusted and trend estimates will be observed for recent periods. In most instances, the only noticeable revisions will be to the previous quarter and the same quarter of a year earlier.

22 A more detailed review of concurrent seasonal factors will be conducted annually, generally prior to the release of data for the December quarter.

TREND ESTIMATES

23 Seasonally adjusted series can be smoothed to reduce the impact of the irregular component in the adjusted series. This smoothed seasonally adjusted series is called a trend estimate.

24 The trend estimates are derived by applying a 7-term Henderson moving average to the seasonally adjusted series. The 7-term Henderson average (like all Henderson averages) is symmetric but, as the end of a time series is approached, asymmetric forms of the average are applied. Unlike weights of the standard 7-term Henderson moving average, the weights employed here have been tailored to suit the particular characteristics of individual series.

25 While the smoothing technique described in paragraphs 23 and 24 enables trend estimates to be produced for recent quarters, it does result in revisions to the estimates for the most recent three quarters as additional observations become available. There may also be revisions because of changes in the original data. For further information, see *Information Paper: A Guide to Interpreting Time Series—Monitoring Trends, 2003* (cat. no. 1349.0) or contact the Assistant Director, Time Series Analysis on Canberra (02) 6252 6540 or email <timeseries@abs.gov.au>.

CHAIN VOLUME MEASURES

26 Chain volume estimates of the value of work done are presented in original, seasonally adjusted and trend terms.

27 While current price estimates of value of work done reflect both price and volume changes, chain volume estimates measure changes in value after the direct effects of price changes have been eliminated and therefore only reflect volume changes. The direct impact of the GST is a price change, and hence is removed from chain volume estimates. The deflators used to revalue the current price estimates in this publication are derived from the same price data underlying the deflators compiled for the dwellings and new other building components, and the new engineering construction component, of the national accounts aggregate 'Gross fixed capital formation'.

28 The chain volume measures of work done appearing in this publication are annually reweighted chain Laspeyres indexes referenced to current price values in a chosen reference year. The reference year is updated annually in the September quarter publication. Each year's data in the value of work done series are based on the prices of the previous year, except for the quarters of the latest incomplete year which are based

EXPLANATORY NOTES *continued*

CHAIN VOLUME MEASURES

continued

upon the current reference year. Comparability with previous years is achieved by linking(or chaining) the series together to form a continuous time series. Further information on the nature and concepts of chain volume measures is contained in the *ABS Information Paper: Introduction of Chain Volume Measures in the Australian National Accounts* (cat. no. 5248.0).

29 The factors used to seasonally adjust the chain volume series are identical to those used to adjust the corresponding current price series.

ACKNOWLEDGMENT

30 ABS publications draw extensively on information provided freely by individuals, businesses, governments and other organisations. Their continued cooperation is very much appreciated: without it, the wide range of statistics published by the ABS would not be available. Information received by the ABS is treated in strict confidence as required by the *Census and Statistics Act 1905*.

RELATED PRODUCTS

31 All tables in this publication, plus some additional state and territory series are available in electronic form on the ABS web site.

32 Users may also wish to refer to the following publications:

Building Activity, Australia, cat. no. 8752.0

Building Approvals, Australia, cat. no. 8731.0

Dwelling Unit Commencements, Australia, Preliminary, cat. no. 8750.0

Engineering Construction Activity, Australia, cat. no. 8762.0

House Price Indexes: Eight Capital Cities, cat. no. 6416.0

Housing Finance for Owner Occupation, Australia, cat. no. 5609.0

Private Sector Construction Industry, Australia, 1996–97, cat. no. 8772.0

Producer Price Indexes, Australia, cat. no. 6427.0.

ABS DATA AVAILABLE ON REQUEST

33 As well as the statistics included in this and related publications, the ABS may have other relevant data available on request. Inquiries should be made to the National Information and Referral Service on 1300 135 070.

ABBREVIATIONS

\$m	million dollars
ABN	Australian Business Number
ABS	Australian Bureau of Statistics
ACT	Australian Capital Territory
ANZSIC	Australian and New Zealand Standard Industrial Classification
ATO	Australian Taxation Office
Aust.	Australia
GST	goods and services tax
NSW	New South Wales
NT	Northern Territory
qtr	quarter
Qld	Queensland
SA	South Australia
Tas.	Tasmania
TAU	type of activity unit
VAT	value added tax
Vic.	Victoria
WA	Western Australia

APPENDIX LIST OF ELECTRONIC TABLES

ELECTRONIC TABLES

The following tables are available electronically via the ABS web site. Not all series in the table go back to the earliest start date.

WORK DONE

	<i>Publication table no.</i>	<i>Electronic table no.</i>	<i>Start date</i>
Construction work done, chain volume measures	1	1	September 1974
Construction work done, chain volume measures, change from previous period	2	n.a.	..
Construction work done, current prices	3	2	March 1957
Construction work done, current prices, change from previous period	4	n.a.	..
Value of building work done, chain volume measures	5	3	September 1974
Value of building work done, chain volume measures, states and territories, original	5	4	September 1974
Value of building work done, chain volume measures, states and territories, seasonally adjusted	5	5	September 1974
Value of building work done, chain volume measures, change from previous period	6	n.a.	..
Value of building work done, current prices, Australia	7	6	March 1957
Value of building work done, current prices, states and territories	7	7	September 1958
Value of building work done, current prices, change from previous period	8	n.a.	..
Construction work done, states and territories, chain volume measures	9	8	September 1974
Construction work done, states and territories, chain volume measures, change from previous period	10	n.a.	..
Construction work done, states and territories, current prices, original	11	9	March 1957
Construction work done, states and territories, current prices, original, change from previous period	12	n.a.	..
Construction work done, states and territories, chain volume measures	13	10	September 1986
Construction work done, states and territories, chain volume measures, change from previous period	14	n.a.	..
Building Activity, work in the pipeline, Australia, current prices, original	15	11	June 2003
Building Activity, work in the pipeline, states and territories, current prices, original	15	12	June 2003
Number of dwellings approved but not yet commenced, states and territories, original	16	13	June 2003

GLOSSARY

Alterations and additions	Building activity carried out on existing buildings. Includes adding to or diminishing floor area, altering the structural design of a building and affixing rigid components which are integral to the functioning of the building.
Alterations and additions to residential buildings	Alterations and additions carried out on existing residential buildings, which may result in the creation of new dwelling units.
Building	A building is a rigid, fixed and permanent structure which has a roof. Its intended purpose is primarily to house people, plant, machinery, vehicles, goods or livestock. An integral feature of a building's design, to satisfy its intended use, is the provision for regular access by persons.
Construction work done	The sum of building work done and engineering construction work done.
Dwelling unit	A dwelling unit is a self-contained suite of rooms, including cooking and bathing facilities and intended for long-term residential use. Units (whether self-contained or not) within buildings offering institutional care, such as hospitals, or temporary accommodation such as motels, hostels and holiday apartments, are not defined as dwelling units. The value of units of this type is included in non-residential building.
House	A house is a detached building predominantly used for long-term residential purposes and consisting of only one dwelling unit. Thus, detached 'granny flats' and detached dwelling units (such as caretakers' residences) associated with non-residential buildings are defined as houses for the purpose of these statistics.
New	Building activity which will result in the creation of a building which previously did not exist.
Non-residential building	A non-residential building is primarily intended for purposes other than long term residential purposes.
Other residential building	An other residential building is a building other than a house primarily used for long-term residential purposes and which contains (or has attached to it) more than one dwelling unit (e.g. includes blocks of flats, attached townhouses, duplexes, apartment buildings, etc.).
Residential building	A residential building is a building predominantly consisting of one or more dwelling units. Residential buildings can be either <i>houses</i> or <i>other residential buildings</i> .
Value of building and engineering work done during the period	Represents the estimated value of work carried out during the quarter on jobs which have commenced.
Value of building work done	Includes the costs of materials fixed in place, labour, and architects fees. It excludes the value of land and landscaping and non-building components such as fencing, paving, roadworks, tennis courts, outdoor pools and car parks.
Value of engineering work done	The value of engineering work done for the private sector consists of the value of work done on prime contracts, plus speculative contracts, plus work done on own account. The value of engineering work done for the public sector is the work done by the organisation's own workforce and subcontractors. In each case, the value excludes the cost of land and repair and maintenance activity, as well as the value of any transfers of existing assets, the value of installed machinery and equipment not integral to the structure and the expenses for relocation of utility services. However, a contract for the installation of machinery and equipment which is an integral part of a construction project is included.
Work approved but not yet commenced	The anticipated completion value of the project, or if that is not known, the approval value. For residential building, 'work approved but not yet commenced' also provides a measure of the number of dwellings that have been approved, but have not commenced by the end of the reference period.

GLOSSARY *continued*

Work in the pipeline	Value of building work that has been approved, but as yet, has not been undertaken. Work in the pipeline has two components. Firstly, there is an estimate of the amount of building work still to be done on projects that have already commenced, 'work yet to be done'. The second component is the building work that has been approved, but had not commenced by the end of the reference period, 'work approved but not yet commenced'. Information on 'work in the pipeline' is available from the June quarter 2003.
Work yet to be done	The difference between the anticipated completion value of the project and the estimated value of work already done up to the end of the reference period for jobs which have commenced.

FOR MORE INFORMATION . . .

<i>INTERNET</i>	www.abs.gov.au the ABS website is the best place for data from our publications and information about the ABS.
<i>LIBRARY</i>	A range of ABS publications are available from public and tertiary libraries Australia wide. Contact your nearest library to determine whether it has the ABS statistics you require, or visit our website for a list of libraries.

INFORMATION AND REFERRAL SERVICE

Our consultants can help you access the full range of information published by the ABS that is available free of charge from our website, or purchase a hard copy publication. Information tailored to your needs can also be requested as a 'user pays' service. Specialists are on hand to help you with analytical or methodological advice.

<i>PHONE</i>	1300 135 070
<i>EMAIL</i>	client.services@abs.gov.au
<i>FAX</i>	1300 135 211
<i>POST</i>	Client Services, ABS, GPO Box 796, Sydney NSW 2001

FREE ACCESS TO STATISTICS

All statistics on the ABS website can be downloaded free of charge.

<i>WEB ADDRESS</i>	www.abs.gov.au
--------------------	-----------------------



2875500009079

ISSN 1445 6966

RRP \$23.00